

Summer 2021

The Hinkley Point C
community magazine

Plugged in

INSIDE: How Hinkley Point C is
working to protect the environment

DISCOVER

how the project is
bringing big benefits
to local communities
P6-7



Picking up pace

ROB'S WELCOME



Welcome to the summer edition of **Plugged in**.

It's continued to be a testing year in terms of Covid-19 and the impact it has upon us all, but I feel proud about what we have achieved so far at Hinkley Point C.

In this edition you will find a special feature on the environment. Our team of specialists are committed to protecting local wildlife and ecology while meeting our commitments to long-term sustainability. You can find out more on pages 8-9.

Hinkley Point C has recently passed an important milestone, by welcoming our 750th apprentice onto our project. It's helping us to create a positive legacy by equipping a generation with the skills to excel. You can read more about the positive impacts of Hinkley Point C by checking out the key findings from our annual socio-economic report on page 6.

Please visit our website for more information, and contact the Plugged in team if you have any stories or feedback you'd like to share.

Rob Jordan
Hinkley Point C
Site Construction and Civils Director

GET IN TOUCH

Have an interesting story you'd like to share, or know someone who has?

- VISIT:** edfenergy.com/hpc
- EMAIL:** hinkley-enquiries@edf-energy.com
- CALL US:** 0333 009 7070
- TWEET US:** @hinkleypointc
- INSTAGRAM:** hinkleypointc

Sign up to Plugged in

To receive Plugged in straight to your inbox, sign up to the email distribution list by heading to: edfenergy.com/pluggedin



PICTURE PERFECT

Follow Hinkley Point C on Instagram to see the latest updates from the project.



'Building Britain's Biggest Nuclear Power Station' on BBC Two: this new four-part series provides unique behind-the-scenes access, following the people who are working to meet the challenge of building Hinkley Point C.



The Arabelle turbine – to be used at Hinkley Point C – is the largest in the world. The low pressure rotors form a critical part of the steam turbines.



Hinkley Point C funds a warden at WWT Steart Marshes, a wetland reserve just miles from our construction site.

Immy's update

Welcome to the summer 2021 edition of Plugged in. I hope you and your families are safe and well.

In this edition, we're featuring a success story of a local sole trader, who has used Hinkley Point C's support to grow her business.

Over the past few months, it's been fantastic to see our landscaped area at the southern end of site blossoming, at a time when we very much needed all the joys of spring.

Check out our back page for a glimpse of the wildlife spotted across our sites.

Immy Silby, Editor



If you have a story to share with Plugged in, you can contact Immy via the details on the left.

SPOTLIGHT ON...



Mark Holmes, Bylor Simulator Trainer and Crane Operative (right), overseeing the use of the on-site crane simulator equipment at Hinkley Point C.

Crane simulator takes training to new levels

To enjoy a career as a crane operative takes extensive training and logging hundreds of hours of hands-on practice.

But training on such expensive equipment and in a safety-critical environment like the Hinkley Point C site can be challenging.

This is why the team at Bylor has a crane simulator to train the next generation of crane operatives.

Installed at the Civils Training Centre on site, the simulator is an important part of Bylor's training and competency assessment plan for lifting team members at Hinkley Point C.

Mark Holmes, Bylor Simulator Trainer and Crane Operative, said: "All the operatives that are new to our site have to come through here to prove their competency, and our existing operatives perform the same tests too.

"People need 300 hours' practice in the machines to complete their qualification and they can use the simulator when the weather makes it impossible to use the real tower cranes."

Other workers who support the crane drivers, such as slinger signallers and crane supervisors, are also put through realistic scenarios and tested to the limits – all from the safety of the simulator driving seat, using controls that are exactly the same as the real thing.

The slingers get a better, all-round view of the job, and anyone who feels they might like to train as a crane operative can try it out on the simulator before making the investment to qualify.

Mark added: "This training method is particularly appealing to the 'PlayStation generation' as they can put to use skills they've perfected playing games, such as sharp hand-eye co-ordination. Some people even have their own driving simulators set-up at home.

"The simulator is a valuable resource, upskilling our lifting team members, many of whom are local people."

The simulator is a serious training tool, and treating it like a real crane means everyone on site gets the maximum benefit from the equipment.



TRIED AND TESTED

Thomas Keirle, Bylor Lifting Technician Apprentice, joined the team in January 2019. The former supermarket manager from Bridgwater was put through his paces in the simulator before getting into a real crane.

"I'm really pleased to have had the opportunity of an apprenticeship with the project and step out of my comfort zone. It's great, as anyone can try the simulator and get a feel for the job before committing to changing career and gaining new skills."

Community

SUPPORTING SOMERSET



GET INVOLVED: Find out more about grants and funding at hpcfunds.co.uk



Thanks to support from Hinkley Point C, Holly Buckingham's coffee business White Feather has gone from strength to strength.

From solo start-up to booming business

When Plugged in last spoke to businesswoman Holly Buckingham (pictured top, middle) back in 2018, she was dishing up quality food and coffees at two cafés. Now, she has four local venues, with a fifth on the way.

She's worked with Hinkley Point C, Somerset Larder and consultant MYA to create a quality brand. Her

business is now catering for the project's workforce at two White Feather Coffee Kitchen cafés within the Somerset Energy Innovation Centres, and the wider community at two more in the centre of Bridgwater and at The Exchange. She will soon be opening another venue at Bridgwater Cricket Club.

Holly said: "I started alone in a small

coffee van in 2016! I've been able to grow my business beyond anything I dreamed of. The project's knock-on effect is enormous. Thanks to Hinkley Point C's support, we've designed a model for the office trade that we can replicate. It's created 30 local jobs and we're supporting other local businesses in everything we do."

Photo credit: Exmoor National Park.



A focus on funding self-guided walks will allow both locals and tourists to enjoy the stunning sights Exmoor has to offer.

Visit Plugged in online to find out more and discover how Hinkley Point C is supporting other tourist attractions. You can also browse the walks and buy guides online at exmoorwalks.org.

Explore Exmoor

Exmoor National Park attracts more than two million visitors a year, which in turn, generates almost £130 million for the rural economy. For many of those tourists, walking in the countryside is the top activity.

The project supports local tourism through the Hinkley Tourism Action Partnership. £22,000 from the partnership's £2.45 million pot has been awarded to help Exmoor National Park create a suite of new self-guided walks, and an interactive website to promote them.

The first of these collections has now launched – 10 short routes designed to help people discover the scenery, wildlife and history of the national park. The routes will also help locals to explore new walks which are on their doorstep. Following people's feedback,

they're shorter than many existing walks, ranging from two kilometres to just under eight kilometres.

Two more collections of walks will launch in the next 12 months – Exmoor Classics and Easier Access Exmoor. Also keep an eye out for a new dark sky discovery trail that Hinkley Point C has also helped fund through the Hinkley Tourism Action Partnership.

Dan James, Rural Enterprise Manager for Exmoor National Park, said: "It's been great to see the return of visitors to Exmoor. Our Explorer Walks are a fantastic way to find your new favourite place on Exmoor. We're grateful for Hinkley Point C's support in making this possible, along with the accompanying website and videos offering a taste of the new walks."



WHAT'S NEW?



FUNDING BRINGS PARK PROJECT TO LIFE

There's now something for everyone to enjoy at the reimagined North Petherton Memorial Playing Field.

Following an £80,000 grant from the HPC Community Fund, the ageing playing field now features a modern children's play area and gym equipment for adults.

There's also a Trim Trail with

equipment for running and keeping fit, and a planted area where people can take a moment to relax.

Peter Farnell, who project managed the revamp for North Petherton Playing Field Trust, said: "Now it's a wonderful place for everyone and there's a real community buzz."

Coming soon...

The Hinkley Point Visitor Centre at Cannington Court is set to open this year, welcoming visitors keen to learn more about nuclear power generation. Keep an eye out on our website for further updates.

CHARITY DONATIONS REDUCE WASTE

HOST, which runs the site campuses, strives to be as green as possible. In its efforts to reduce waste, it has donated 400 pillows to Arc Inspire homelessness charity and the YMCA.

Cristina Secara, HOST's Sales and Marketing Co-ordinator, said: "We're always looking for ways to make positive contributions to the local

area which is why, when we recently renewed our pillows, we donated them instead of disposing them to landfill."

The MEH Alliance has also found a new home for office equipment freed up by its move out of an old office. Cannington's Brymore School is reaping the benefits of stationery, whiteboards, shelving and more.

Roundup

PROJECT-RELATED PEOPLE AND NEWS

Major boost for the South West

New jobs, new contracts and more investment – how Hinkley Point C is helping Somerset and the wider South West economy prosper.

756 apprentices ... have been learning on the job at Hinkley Point C.

£3.2 billion ... has already been spent with businesses in the South West.

14,000 people

... have been trained and assessed in the Bridgwater-based Construction Skills and Innovation Centre and the Welding Centre of Excellence.



36%

... of the Hinkley Point C workforce is from the local area.

1,254

... the number of businesses in Hinkley Point C's supply chain based in the region.

As well as helping in the fight against climate change, Hinkley Point C is bringing long-term benefits and opportunity to local people and businesses.

The project has already created 11,769 jobs and, with the help of the Hinkley Point C Jobs Service and investment in local training facilities, these jobs are benefitting many individuals and organisations.

Find out more by downloading Hinkley Point C's latest Socio-economic Impacts Report from edfenergy.com/hpc.



Local opportunities



Stacey Sowden, an Apprentice Steel Fixer, is completing her training at Hinkley Point C after seeing an article about Blyor's pledge to drive more women into construction.



Bridgwater-based Elecsis Limited won a £330,000 contract, working with Veolia Water Technologies, on Hinkley Point C's raw water storage and water demineralisation control buildings.



The Welding Centre of Excellence addresses the national welding skills shortage by training locals. It has already trained and assessed 250 individuals.

A safer way to help a local hospice

A children's hospice in Somerset is the latest charity to benefit from a scheme at Hinkley Point C that encourages team members to look after the safety of themselves and others.

Children's Hospice South West (CHSW) will get £50 for every day safety targets are met and £3,000 for every month the goals are achieved. The donations are part of a safety scheme called the HPC Way Safe Day Initiative, which promotes safer ways of working at the site.

One of the safety targets encourages Hinkley Point C team members to be good neighbours when out and about in the community.

Laura Roberston, Area Fundraiser at CHSW, said: "We are so grateful to Hinkley Point C. Our care teams provide vital lifeline support to local families facing unimaginable challenges throughout the pandemic. This donation will help ensure they continue to be there."

Earlier this year, St Margaret's Hospice Care in Taunton received over £5,000 through the HPC Way Safe Day initiative.



Children's Hospice South West care teams continue to care for local families throughout the pandemic.



The initiative helps local women into employment and also holds engaging events, such as this guided walk to promote health and wellbeing.

Women into work scheme

A scheme to support local women in fulfilling their employment potential and encourage them to take on roles traditionally undertaken by men has gained the support of Hinkley Point C.

Run by Sedgemoor District Council's 'Under Construction' Employment and Skills Centre, the 100 Women First initiative is supported by the Hinkley Point C Jobs Service. It has also received £46,000 from the HPC Community Fund, with a further

£84,000 to come over two years if targets are met.

More than 100 women have enrolled in the initiative, helping them get into work, or gain better-paid roles. As a result:

- 7 have started a business
- 25 have paid jobs
- 33 are in training
- 50 have been referred to partner organisations for more support.

100 Women First, which will continue to deliver support to local people until late 2023, was shortlisted for a Civil Service Diversity and Inclusion Award.

Under Construction has launched a similar initiative for men, called Men4Sedgemoor.

If you are interested in finding out more about the schemes, contact info@underconstruction.org.uk.

Championing change

Sacha Dench, Ambassador for the UN's Convention on Migratory Species, is partnering up with EDF on a special challenge to help raise awareness of climate change.

The conservationist, motivational speaker and adventurer is taking part in a world first – flying around mainland Britain in a wind and green electricity-powered paramotor – in the run up to the United Nations Climate Change Conference (COP26).

On her journey, Sacha will be making a series of stops to talk to people and organisations passionate about tackling climate change, with Hinkley Point C and Cannington Court on the agenda.

Simone Rossi, EDF's UK CEO, said: "As Britain's biggest generator of zero

carbon electricity, generating power from wind, nuclear and solar, EDF is excited to support the Round Britain Climate Challenge. It is a brilliant initiative to highlight climate change and some of the amazing people tackling it."

Keep an eye out on our social channels for further updates on Sacha's expedition.



Low-carbon energy on the agenda

The need for reliable, low-carbon energy will be thrown into the spotlight in November as the eyes of the world turn to Glasgow, host city for the United Nations Climate Change Conference (COP26).

Once operational, Hinkley Point C will provide 7% of the UK's low-carbon electricity needs. That's a massive contribution towards achieving the world's most ambitious climate change target – a 78% reduction in emissions by 2035 compared to 1990 levels.

Supporting the environment

Hinkley Point C is playing a vital role in the road to Net Zero even before it starts producing zero-carbon electricity for six million homes. With the impact on the environment being minimised during construction, the project is committed to leaving nature in a better state than before for local wildlife and, of course, people...

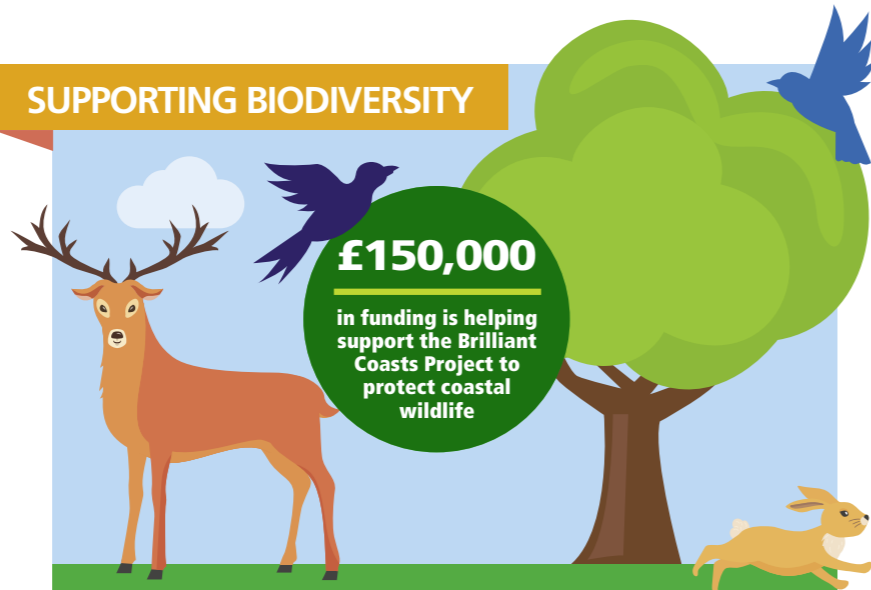
Whether it's creating new habitats for wildlife, funding projects which protect the environment, or hiring passionate people who care, Hinkley Point C is working to deliver on its commitment to the environment.



"Having come from a farming background on the Somerset Levels, I've always had a keen interest in the environment and the local area. I feel privileged to have a role that ensures our work here does not impact on the local or wider environment."

Emma Keen, Environment and Sustainability Manager, EDF

SUPPORTING BIODIVERSITY



£150,000

in funding is helping support the Brilliant Coasts Project to protect coastal wildlife

Increasing biodiversity is a big focus. As part of Hinkley Point C's commitment to leave a positive legacy, land on the southern edge of the site has already undergone early restoration. It's now home to a variety of wildlife – with deer, hare and a range of birds already spotted in the area.

The project is taking care of the coast, too. Hinkley Point C is working closely with Somerset Wildlife Trust, with more than £150,000 in funding supporting its Brilliant Coasts Project. Among other initiatives, it's allowing volunteers to receive ShoreSearch and Sea Watch training – putting them on the lookout for marine wildlife, including dolphins and porpoises. These surveys contribute to valuable national data collection.

Plus, at Steart Marshes, Hinkley Point C is working with the Wildfowl and Wetlands Trust (WWT) to boost

bird numbers through the habitat creation scheme at the wetland reserve, where Hinkley Point C is funding the warden among other things. Thanks to WWT's work, bird populations are flourishing. They're up from 19,000 birds and 29 species in 2014 to more than 30,000 birds and 53 different species making it their home today.



Photo credit: Nigel Phillips.

Neil Perry, Proelectric Solar Lighting Tower Supervisor, stands in front of one of Hinkley Point C's solar powered tower lights.



500,000

litres of diesel have been saved by using solar powered lights on site

CUTTING CARBON

The project's carbon footprint is being reduced in innovative and exciting ways.

So far, 500,000 litres of diesel have been saved by installing solar powered lights around the site. That's enough to fill 3,330 bathtubs.

Emissions in the joinery workshop have been cut too, by switching from a diesel-powered lift to an electric one – that's a 57% carbon reduction.

By sorting waste on site, Hinkley Point C has reduced the number of vehicles moving off site by a whopping 75%.

Plus, an electric van is now being used to escort components across

the site, cutting carbon emissions for this task by 75%.

Hinkley Point C's 50-strong Environment team is constantly looking at new ways to carry out tasks in order to continue cutting its carbon footprint.



£2,000

is contributing to keeping local canals clear of obstructive plants



CASH FOR COMMUNITY WILDLIFE WORKS

The HPC Community Fund is supporting many local projects that benefit the area's wildlife. Thanks to a £2,000 boost, volunteers and the Inland Waterways Association are keeping canals clear of invasive plants that can upset the ecological balance. These waterways are an important home to dragonflies, water beetles, bugs and snails as well as fish and the animals that live on their banks.

In addition, community-based Magna Housing Association received £3,595 towards its community bird box project to give wildlife a home alongside its housing for humans.

IT ALL ADDS UP...

Here are just some of the ways the project has made a real difference so far...

65,000

trees and shrubs planted to date



£540,000

donated to environmentally focused projects

50

environment specialists across all sites.



Efficiencies in the making

How building twin nuclear reactors provides a unique opportunity for the Hinkley Point C project to continually learn.

Lessons learnt during the construction of the project's first nuclear reactor are helping the team on site to build the second one quicker while improving right-first-time quality.

That's also good news for major infrastructure projects of the future – especially Hinkley Point C's proposed sister station at Sizewell in Suffolk.



Permanent buildings take shape around Reactor One.

RIGHT FIRST TIME

Hinkley Point C has produced more than 45,000 concrete segments, which will line the three tunnels under the Bristol Channel that will supply water for the crucial cooling system. These must be made to exacting nuclear industry quality standards. Water then goes into the giant cooling water circuit outlet pipes, which carry water around



the site. Works included welding 353 pipes, fixing 1,950 tonnes of steel and pouring 19,500m³ of concrete. Thanks to previous learnings, pipes for the Second Reactor were completed two months faster than those on Reactor One.



GATHERING SPEED

The pace was picked up on the second ring of the reactor building in Reactor One – in fact, the time taken per metre of weld was 36% quicker than the first. This saving adds up, considering the prefabricated steel ring has a diameter of 47 metres, is over 17 metres high and requires 934 metres of welds. On Reactor Two, a major

concrete pour for the foundations of the reactor building was completed three months quicker than the same one for Reactor One. Valuable lessons learned from the previous pour helped the team achieve the milestone quicker this time. In total, 2,240m³ of concrete was poured over 36 hours.

Bomb disposal in Bristol Channel

Hinkley Point C's Marine Works team has safely removed an unexploded bomb in the Bristol Channel.

The bomb, identified as a German SC 250 from World War II, was discovered during a routine marine survey.

The team, alongside diving contractor Hughes Subsea Services, established a two kilometre marine exclusion zone around the bomb before safely detonating live charges to dispose of it.

Ian Hughes, of Hughes Subsea Services, said: "The bomb was water damaged and couldn't be left unattended. Due to its location by the tunnels currently being dug by Hinkley Point C, there was a significant amount of tunnel monitoring carried out to ensure the live charge would not impact the works. Everything went to plan, but it was a tense situation –



you can never take these things for granted."

The Bristol Channel is one of the UK's most challenging places for diving operations, due to its extreme tidal flows.

Ian's team has spent the last six months clearing the seabed to make way for tunnelling for the power station's cooling water system. They have disposed of items including anchors and an aircraft propeller and engine.



Part of a propeller (main) was recovered during an operation where a bomb like the one pictured (inset) was also safely removed.

WHAT'S IN A NAME?

Learn the Hinkley Point C lingo as Plugged in breaks down its technical terms...

Conventional Island and Nuclear Island

A nuclear power station can broadly be divided into two areas: Nuclear Island (the area that includes the reactors, along with the buildings and machinery that support their safe function) and Conventional Island (the location of the equipment concerned with electricity generation, such as the Electrical Building).

Emmeline's journey nears the end

Emmeline, the largest of Hinkley Point C's three Tunnel Boring Machines (TBMs), is close to completing her 1.8 kilometre journey under the Bristol Channel, creating an 8-metre diameter tunnel that's been lined with nuclear-grade segments to form the project's outfall tunnel.

The tunnel will eventually take water back out to sea after it's been brought to site by two separate tunnels – known as intake tunnels – as part of the system to cool Hinkley Point C's twin reactors.

Emmeline has been busily mining the tunnel 33 metres under the Bristol Channel at an average speed of 19 metres per day.



SPOTTED ON SITE – ENVIRONMENT



Visit our website to see even more great pictures and videos of wildlife spotted across our sites

Our wonderful wildlife

We're committed to making sure that local nature is left in a better state than when we began construction at Hinkley Point C. That's why it's so fantastic to see our local flora and fauna blooming across our main site, local land and facilities. Here are some snaps of the natural beauty found at our sites across Somerset...

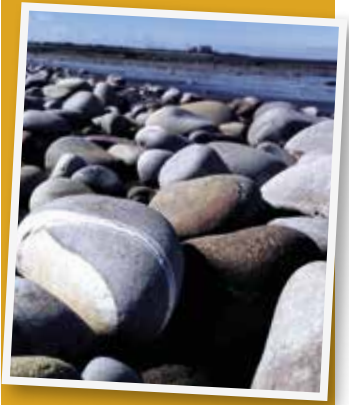


JUST THE JOB

Looking for a career change, want to get involved with Hinkley Point C, or are curious about the opportunities available? Register for free and browse the latest job and apprenticeship opportunities at hpcjobsservice.edfenergy.com.

CONGRATULATIONS!

Well done to Jenny McCubbin, who has won a hamper provided by Pyne's of Somerset, for capturing this great image, taken from the foreshore across to Hinkley Point C.



WANT TO FIND OUT MORE?

If you're interested in learning more about the stories covered in this issue, visit edfenergy.com/pluggedin.

You'll find further details on...

- The Hinkley Point C crane simulator
- Construction progress
- Exmoor National Park funding
- The HPC Way charities supported by the project.

If you're a Somerset resident and want to join our postal list, email hinkley-enquiries@edf-energy.com and get our publication delivered to your door.

Pluggedin is designed and produced in the UK by 44 Communications. This magazine is printed sustainably.